



KONE provides innovative and eco-efficient solutions for elevators, escalators and automatic building doors. We support our customers every step of the way; from design, manufacturing and installation to maintenance and modernization. KONE is a global leader in helping our customers manage the smooth flow of people and goods throughout their buildings.

Our commitment to customers is present in all KONE solutions. This makes us a reliable partner throughout the life cycle of the building. We challenge the conventional wisdom of the industry. We are fast, flexible, and we have a well-deserved reputation as a technology leader, with such innovations as KONE MonoSpace®, KONE MaxiSpace™, and KONE InnoTrack™. You can experience these innovations in architectural landmarks such as Capital City in Moscow, Hongqiao Transport Hub in Shanghai, North LaSalle in Chicago and Tour First in Paris. KONE employs on average 43,000 dedicated experts to serve you globally and locally in over 50 countries.

KONE Elevator India Private Limited
Registered Office and Factory
50, Vanagaram Road, Ayanambakkam
Chennai - 600 095, India
Tel. No. +91 44 26533901 - 04
Fax No. +91 44 26533912

Service Number:
18004254666 / 18004254254

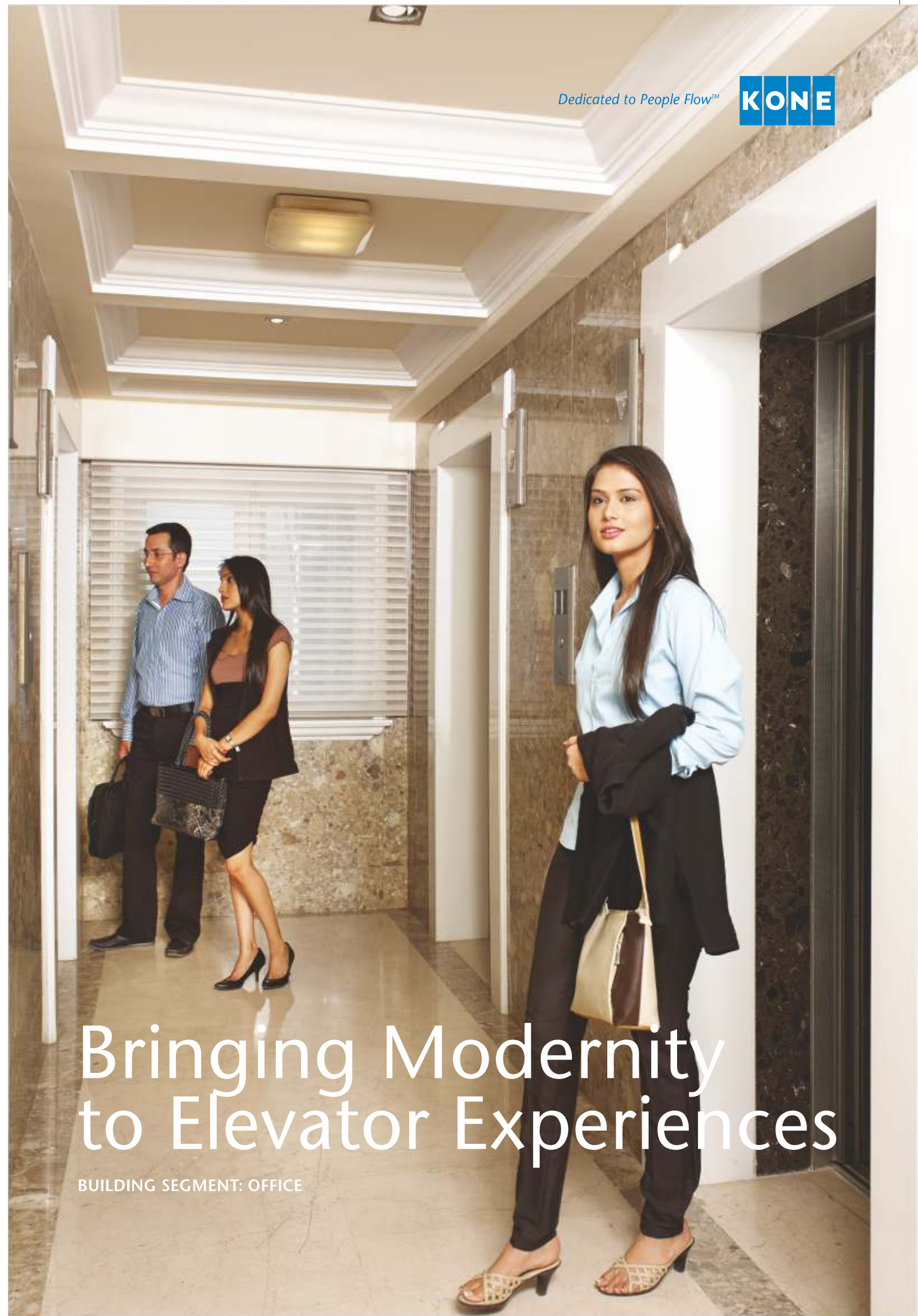
Contact person:

Tel. No:

Visit us at www.KONE.in

This publication is for general informational purposes only and we reserve the right at any time to alter the product design and specifications. No statement contained in this publication shall be construed as a warranty or condition, expressed or implied, as to any product, its fitness for any particular purpose, merchantability, quality or shall be interpreted as a term or condition of any purchase agreement for the products or services contained in this publication. Minor differences between printed and actual colors may exist. KONE®, Dedicated to People Flow™, KONE MonoSpace®, KONE MiniSpace™, KONE EcoDisc®, are trademarks or registered trademarks of KONE Corporation. Copyright © 2014 KONE Corporation.

Dedicated to People Flow™



Bringing Modernity to Elevator Experiences

BUILDING SEGMENT: OFFICE



Project Summary

Raheja Center, Nariman Point, Mumbai

A 14 floor commercial complex occupied by numerous prominent institutions.

KONE Modernization Solution

- FURE (Full Replacement) of four old Otis elevators with KONE MiniSpace™ elevators.
- Speed increased from 1.5 mps to 2 mps
- Car capacity increased from 13 persons to 15 persons.
- Digital Display System to reduce waiting time.
- Vandal proof car design.
- "AA" class category ride comfort



Modernizing aging elevators

Aging elevators, while a source of discomfort to the building's users, are also a blot on the building's image and prestige.

KONE's Modernization solutions not only restore their performance to optimum levels but also make the building look modern and contemporary.

Combining future-proof design and cutting edge technology, KONE products offer superior ride comfort for the end users and ensure the maximum level of safety.

Ranging from part replacement solutions where only essential components are changed to full replacement solutions, the KONE modernization solutions are flexible, versatile and customer friendly.

As an innovations leader, KONE provides the best in class eco-efficiency, resulting in substantial energy savings for the customer.

Welcome to the world of KONE. A world of commitment, benchmark setting quality and dedicated partnership.

Building customer confidence through dedicated partnership

Clear and advance planning in cooperation with the customer ensured successful execution of the project. An expert team from KONE was present at the site during the entire duration to supervise every aspect of the project. The Architrave was constructed to maintain the building's aesthetics and an expert contractor was commissioned to make sure that people moved with ease within the building. As a result of excellent customer relationship and satisfaction, KONE has been awarded more prestigious projects across the country by the highly appreciative customer.





Meeting an unique challenge



To meet the demands of the building's People Flow™, increasing the car capacity was an essential requirement of the project. **KONE has increased the car capacity to 15 persons from a previous capacity of 13 and is the only elevator company in India to achieve this in the same shaft.** Another demanding task fulfilled by the KONE team was dividing the previous double shaft into two independent and separate shafts.

The major challenge was to execute the entire project without disrupting the people movement of the busy office building. The three phase was planned in such a manner that the movement of office goers continued uninterrupted. Work was executed from within the shafts and was carried on during the nights. With excellent coordination with the customer, the technical, installation and delivery teams pre-planned and brought in material in a phased manner, keeping the lobby area clear at all times.

Raheja Center

Nariman Point

Making busy people move around with ease

With rapid urbanization comes unprecedented challenges in handling the burgeoning people flow of an office complex. Especially in a major urban center like Mumbai where growth happens on a everyday basis. After 20 years of being one of the most sought after destinations for office space in the city, the Raheja Center office complex, owned by the reputed Raheja Group, had reached its limits.

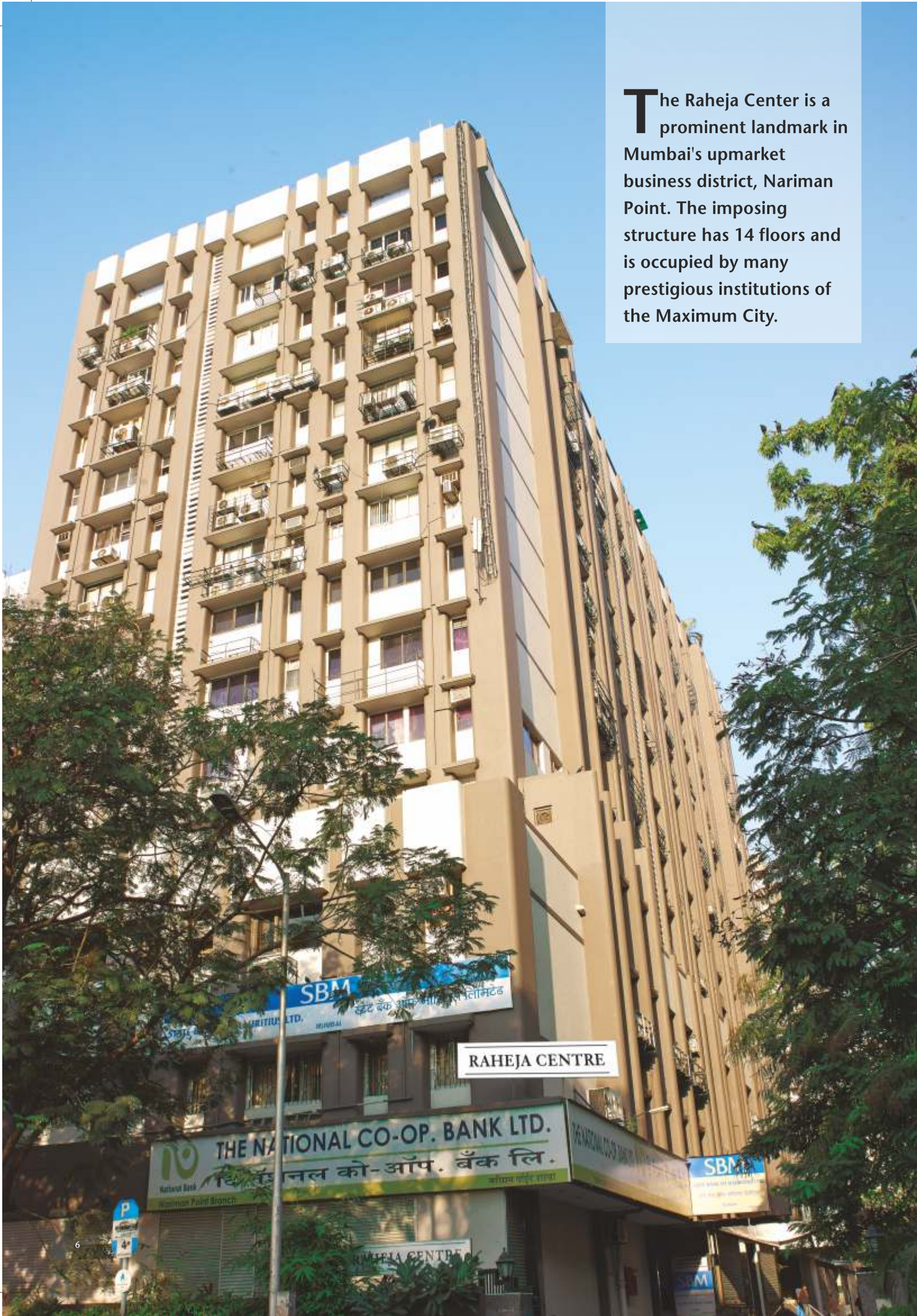
The number of visitors as well as the people using the building had grown exponentially. The lobby was heavily overcrowded during the peak hours with people hurrying to reach their floors. During rush hours, the queue of people waiting for an elevator spilled outside the lobby, resulting in negative perception of the building and excessive waiting time for its building's users.

The customer's expectation was to ease the movement of people in the entire building, particularly in the lobby. The KONE team took the customer on a visit to the recently completed India Bulls building, where KONE had provided its latest People Flow solutions. Impressed by the efficiency of modern technology in achieving a smooth and uninterrupted People Flow™ in the building, the customer awarded the modernization project for the full replacement of all the four elevators at the Raheja Center to the KONE team.

Modernization was undertaken after a detailed project and technical planning based on thorough analysis of the traffic flow situation, elevator usage pattern and the condition of the building by KONE expert teams.

The KONE team commenced the work in December 2010 and completed the Modernization in February 2012. The entire project was done in three phases, without any alteration to the building's interiors and making sure it was business as usual in the bustling multi use office complex.





The Raheja Center is a prominent landmark in Mumbai's upmarket business district, Nariman Point. The imposing structure has 14 floors and is occupied by many prestigious institutions of the Maximum City.



All the four old elevators have been replaced with KONE Full Replacement Solutions. Sporting elegant and trendy designs, the new cars enhance the look and feel of the entire lobby area.

Offering "AA" class ride comfort, the speed of all the four elevators have been increased to 2 mps, making the rides quicker, safer and smoother.

Four MiniSpace™ gearless machines have replaced the old machines. With their compact size, the new machines have freed a precious 25% building space occupied by the previous machine room. With their eco-efficient edge, the new machines now save 20% more energy than the older ones.



As value addition to the customer KONE has installed a Digital Display System that informs the approaching end user on the travel status of all the four elevators. This has resulted in easy accessibility for the vertical traveller as well as uncluttered people movement in the lobby area.

